

BORNUEO 1140

Fully insulated wall meter box for horizontal water meters ND15 L = 110 to 115 mm

PRINCIPAL CHARACTERISTICS

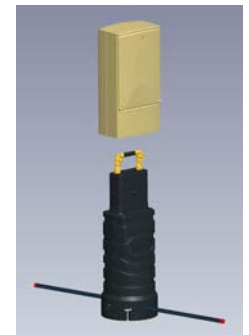
- Wall mounted meter box for drinking water supply meeting all installation and management requirements :
 - Reduced space requirement, run-off waterproof.
 - Type of insulation adapted to the climate conditions of the sites.
 - Complete set with valves and fittings, ready to install, with PE inlet and outlet pipes.
 - 150 mm space for surface finishing.
 - Separate box and base for easier replacement of parts.
- The valves and fittings, completely interchangeable, enable all management and maintenance functions of the terminal :
 - Water meter inlet ball valve with 1/4 turn handle, which can be handled by the end user - Secuo-Stop lock available.
 - Water meter outlet with check valve
 - Pressure tap and drain cap situated respectively before and behind the check valve.
- The box completes this water meter box :
 - Door :
 - Equipped with a latch lock with triangular head, inoperative without appropriate key.
 - Interchangeable without demounting the box thanks to the retractable lower hinge.
 - Thermal inside insulation.
 - Full opening for easy access to the meter and valves.
 - Box :
 - Can be built in walls.
 - Left / right and forward / backward angular adjustment up to + or - 3,5° allowing a fine adjustment of the box's orientation.
 - Support :
 - Ringed surface for an optimized compaction resistance.
 - Reinforced insulation being also the outer shell (HUOT patent).
 - The design of the support enables to distribute the PE connection pipes following different angles with 45° intervals (HUOT patent).
- Maximum pressure losses (without water meter) :

at nominal flow = 1,5 m ³ /h =>	120 mb
at maximum flow = 3 m ³ /h =>	550 mb.
- Supplied in individual carton package with :
 - Special key for the door.
 - Instructions for installation and use.

Allowable operating pressure :

- Valves : 16 bars / check valve : 10 bars.

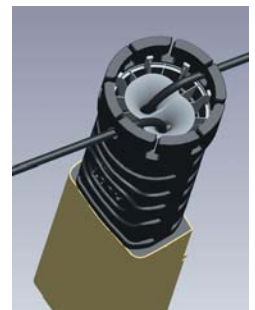
Tightness tests of valves in accordance with NF E 29-311 - ISO 5208 : PN25 standards
 Strength of the swivelling nuts in accordance with NF P 43-007 standard
 REXUO fittings connection tests in accordance with ISO 3458 - ISO 3459 - ISO 3501 - ISO 3503 standards
 Test certificates in accordance with current standards are available on request.



Dissociated box and support

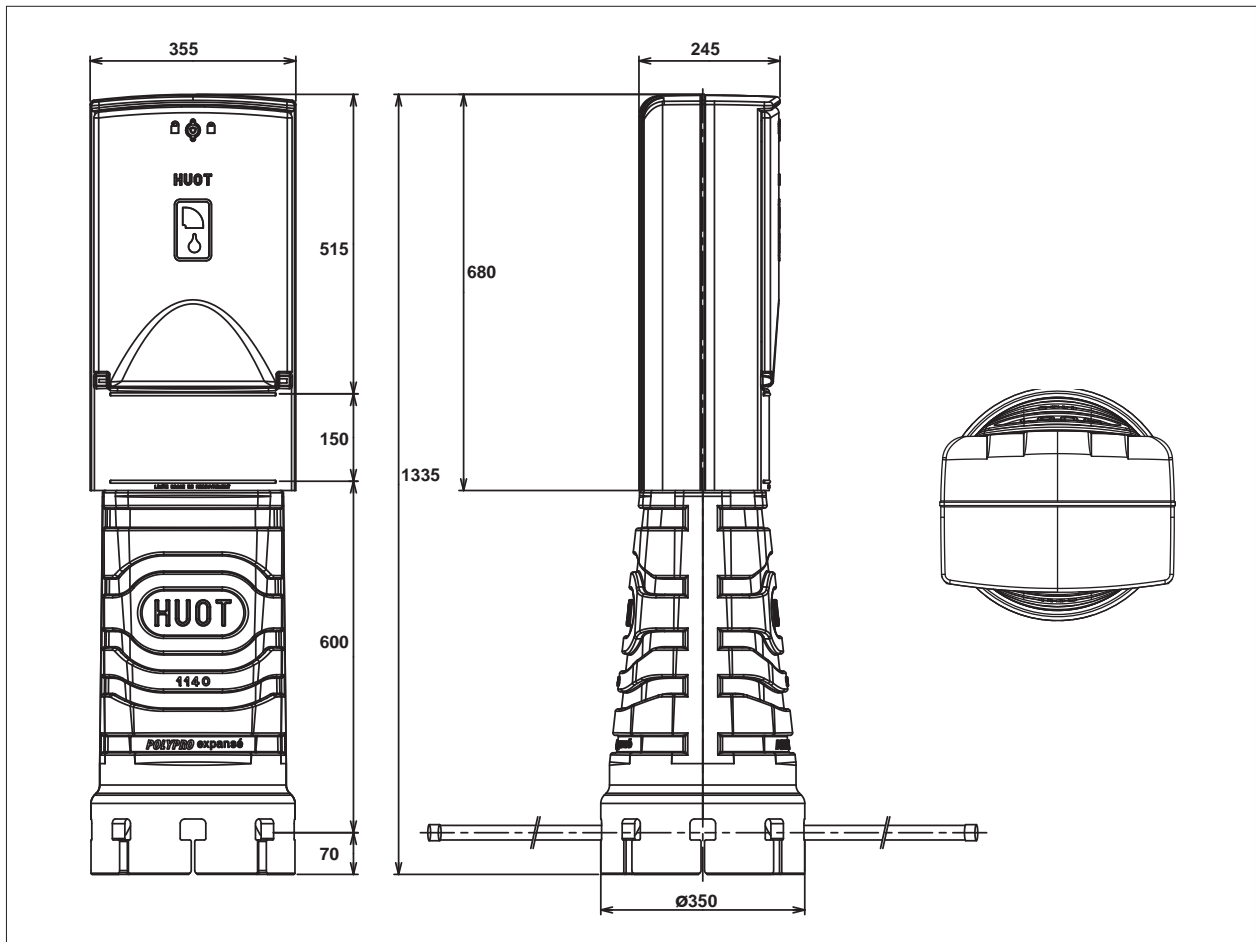


Interchangeable valves and fittings



PE pipes distribution possible for 8 different angles

BORNUO 1140



TECHNICAL SPECIFICATIONS

- Box : PE
- Door lock and key : brass to EN 1982 / EN 12164 / EN 12165 / EN 12168 standards
- Valves and fittings : brass to EN 1982 / EN 12164 / EN 12165 / EN 12168 standards
Elastomere EN 681-1, PTFE
- Support : PPE

PRODUCT CODE	Inlet OD (mm)	Outlet OD (mm)	Meter length (mm)	Weight (kg)
1140.M6	25	25	110 to 115 mm	8,410